

MFC Windows Programming: Document/View Approach

- ⌘ More detailed notes at:
<http://www.cs.binghamton.edu/~reckert/360/class15.htm>

MFC Windows Programming: Document/View Approach

- ⌘ App/Window approach creates application and window objects
- ⌘ Mirrors Win32 API program organization
- ⌘ Main difference-MFC automates & masks details
- ⌘ But data & rendering of data are intertwined
- ⌘ Frequently, data members exist in window class
 - Example in MSGNEW.CPP: Output string defined in window-based class
 - But output string is data
 - Really has nothing to do with window it's being displayed in

- ⌘ Conceptually data is different from rendering of data
- ⌘ In an App/Window they are mixed together in same window class
- ⌘ Frequently need to have different views of same data
 - (e.g., displaying data in a window or on a printer)
- ⌘ So it would be good to separate data and data presentation

Doc/View Achieves Separation of Data and Data Presentation

- ⌘ Encapsulates data in a **CDocument** class object
- ⌘ Encapsulates data display mechanism and user interaction with it in a **CView** class object
- ⌘ Classes derived from **CDocument**
 - Should handle anything affecting an application's data
- ⌘ Classes derived from **CView**
 - Should handle display of data and user interactions with that display

Other Classes are Still Needed

- ⌘ Still need to create **CFrameWnd** and **CWinApp** classes
- ⌘ But their roles are reduced

Documents

- ⌘ **Document**
 - Contain any forms of data associated with the application (pure data)
 - Not limited to text
 - Could be anything
 - game data, graphical data, etc.

Document Interfaces

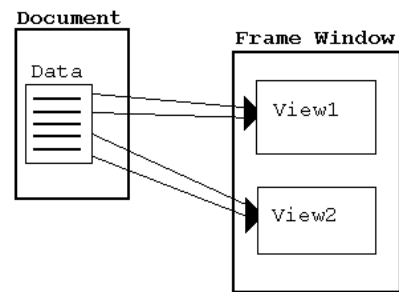
- ⌘ **Single Document interface (SDI)** application
 - Program that deals with one document at a time
 - All our programs to date have been **SDI** apps
- ⌘ **Multiple Document Interface (MDI)** application
 - Program organized to handle multiple documents simultaneously
 - More than one document can be displayed in a window at the same time
 - Example of an **MDI** application: Microsoft Word

Views

- ⌘ A rendering of a document; a physical representation of the data
- ⌘ Provides mechanism for displaying data stored in a document
- ⌘ Defines how data is to be displayed in a window
- ⌘ Defines how the user can interact with it

Frame Window

- ⌘ Window in which a view of a document is displayed
- ⌘ A document can have multiple views associated with it
 - different ways of looking at the same data
- ⌘ But a view has only one document associated with it

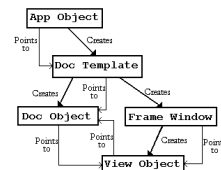


Documents, Views, & Frames

MFC Template Class Object

- ⌘ Handles coordination between documents, views, and frame windows
- ⌘ In general:
 - Application object creates a template...
 - which coordinates display of document's data...
 - in a view...
 - inside a frame window

Template/Document/View/Window



Relationship between Application, Document Template, Document, Frame Window, & View in a Document/View Approach MFC Program.

Serialization

- ≠ Provides for storage/retrieval of document data
- ≠ Usually to/from a disk file
- ≠ **CDocument** class has serialization built into it
 - So in DOCUMENT/VIEW apps, saving/storing data is straightforward

Dynamic Creation

- ≠ In Doc/View approach, objects are dynamic
- ≠ Doc/View program is run
 - Its frame window, document, and view are created dynamically
 - Doc/View objects synthesized from file data
 - Need to be created at load time
 - To allow for dynamic creation, use dynamic creation macros
 - in classes derived from **CFrameWnd**, **CDocument**, and **CView**

Dynamic Creation Macros

- ≠ **DECLARE_DYNCREATE(class_name)**
 - in declaration (.h file)
- ≠ **IMPLEMENT_DYNCREATE(class_name, parent_class_name)**
 - (in .cpp file)
- ≠ After **IMPLEMENT_DYNCREATE()** macro is invoked:
 - Class is enabled for dynamic creation
 - Now a template can be created

Document/View Programs

- ≠ Almost always have at least four classes derived from:
 - **CFrameWnd**
 - **CDocument**
 - **CView**
 - **CWinApp**
- ≠ Usually put into separate declaration (.h) and implementation (.cpp) files
- ≠ Because of template and dynamic creation, there's lots of initialization
- ≠ Could be done by hand, but nobody does it that way

Microsoft Developer Studio AppWizard and ClassWizard Tools

AppWizard

- ≠ Tool that generates a Doc/View MFC program framework automatically
- ≠ Can be built on and customized by programmer
- ≠ Fast, efficient way of producing Windows Apps
- ≠ Performs required initialization automatically
- ≠ Creates functional **CFrameWnd**, **CView**, **CDocument**, **CWinApp** classes
- ≠ After AppWizard does its thing:
 - Application can be built and run
 - Full-fledged window with all common menu items, tools, etc.

ClassWizard

- ✎ Facilitates message handling in a framework-based MFC application
- ✎ A tool that connects resources & user-generated events to program response code
- ✎ Writes C++ skeleton routines to handle messages
- ✎ Inserts code into appropriate places in program
- ✎ Code then can then be customized by hand
- ✎ Can be used to create new classes or derive classes from MFC base classes
- ✎ Add new member variables/functions to classes
- ✎ In .NET many "class wizards" are available through Properties window

SKETCH Application

- ✎ Example of Using AppWizard and ClassWizard
- ✎ User can use mouse as a drawing pencil
 - Left mouse button down:
 - lines in window follow mouse motion
- ✎ Left mouse button up:
 - sketching stops
- ✎ User clicks "Clear" menu item
 - window client area is erased

- ✎ Sketch data (points) won't be saved
 - So leave document (**CSketchDoc**) class created by AppWizard alone
- ✎ Base functionality of application (**CSketchApp**) and frame window (**CMainFrame**) classes are adequate
 - Leave them alone
- ✎ Use ClassWizard to add sketching to **CView** class

Sketching Requirements

- ✎ If left mouse button is down:
 - Each time mouse moves:
 - Get a DC
 - Create a pen of drawing color
 - Select pen into DC
 - Move to old point
 - Draw a line to the new point
 - Make current point the old point
 - Select pen out of DC

Variables

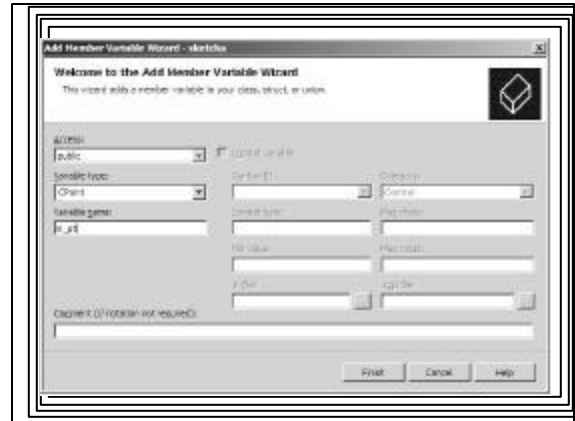
- ✎ `BOOLEAN m_butdn`
- ✎ `CPoint m_pt, m_ptold`
- ✎ `COLORREF m_color`
- ✎ `CDC* pDC`

Steps in Preparing SKETCH

- ✎ 1. "File / New / Project"
 - Project Type: "Visual C++ Projects"
 - Template: "MFC Application"
 - Enter name: Sketch
- ✎ 2. In "Welcome to MFC Application Wizard"
 - Choose "Single Document" Application Type
- ✎ 3. Build App --> Full-fledged SDI App with empty window and no functionality
- ✎ 4. Add member variables to CSketchView
 - Can do manually in .h file

4. Easier to:

- Select Class View pane in Properties window
- Select and expand (+) SketchView class
 - Note member functions & variables
- Right click on CSketchView class
 - Choose "Add / Variable"
 - Launches "Member Variable Wizard" Dialog Box
 - Variable Type: enter CPoint
 - Name: m_pt
 - Access: Public (default)
- Repeat for other variables:
 - CPoint m_ptold
 - bool m_butdn
 - COLORREF m_color
 - CDC* pDC



4. Add message handler functions:

- Select CSketchView in Class View
- Select "Messages" icon in Properties window
 - Results in a list of WM_ messages
- Scroll to WM_LBUTTONDOWN & select it
- Add the handler by clicking on "<Add> OnLButtonDown" in resulting combo box
 - Note that the function is added in the edit window and the cursor is positioned over it:
 - After "TODO..." enter following code:


```
m_butdn = TRUE;
m_ptold = point;
```



Repeat process for WM_LBUTTONDOWN handler

- Scroll to WM_LBUTTONDOWN
- Click: "<Add> OnLButtonDown",
- Edit Code by adding:


```
m_butdn = FALSE;
```

Repeat for WM_MOUSEMOVE

- Scroll to WM_MOUSEMOVE
- Click: "<Add> OnMouseMove"
- Edit by adding code:


```
if (m_butdn)
{
    pDC = GetDC();
    m_pt = point;
    CPen newPen (PS_SOLID, 1, m_color);
    CPen* pPenOld = pDC->SelectObject (&newPen);
    pDC->MoveTo(m_ptold);
    pDC->LineTo (m_pt);
    m_ptold = m_pt;
    pDC->SelectObject (pPenOld);
}
```

- ⚡ 5. Initialize variables in CSketchView constructor
 - Double click on CSketchView constructor (in Class View)
 - After "TODO...", Add code:


```
m_butdn = FALSE;
m_pt = m_ptold = CPoint(0,0);
m_color = RGB(0,0,0);
```
- ⚡ 6. Build Project and Run

Menus and Command Messages

- ⚡ User clicks on menu item
- ⚡ WM_COMMAND message sent
- ⚡ IDM_XXX identifies which menu item
- ⚡ No predefined handlers
- ⚡ So message mapping macro is different
- ⚡ ON_COMMAND(IDM_XXX, OnXxx)
 - OnXxx() is the handler function
 - Must be declared in .h file and defined in .cpp file

Adding Color and Clear Menu Items to SKETCH App

- ⚡ Resource View (sketch.rc folder)
 - Double click Menu folder
 - Double click IDR_MAINFRAME menu
 - Add: "Drawing Color" popup menu item with items:
 - "Red" (ID_DRAWINGCOLOR_RED)
 - "Blue" (ID_DRAWINGCOLOR_BLUE)
 - "Green" (ID_DRAWINGCOLOR_GREEN)
 - "Black" (ID_DRAWINGCOLOR_BLACK)
 - Add another main menu item:
 - "Clear Screen" (ID_CLEAR)

Add Menu Item Command Handler Function

- One way: Use "Event Handler Wizard"
- In "Resource View" bring up menu editor
- Right click on "Red" menu item
- Select "Add Event Handler" ⚡ "Event Handler Wizard" dialog box
 - Class list: CSketchView
 - Message type: COMMAND
 - Function handler name: accept default
 - OnDrawingColorRed
 - Click on "Add and edit"
 - After "TODO..." in editor enter following code:


```
m_color = RGB(255,0,0);
```



Another Method of Adding a Menu Item Command Handler

- In Class View Select CSketchView
- In Properties window select Events (lightning bolt) icon
- Scroll down to: ID_DRAWINGCOLOR_RED
- Select "Command"
- Accept "OnDrawingColorRed" handler
- Edit code by adding:


```
m_color = RGB(255,0,0);
```



Repeat for ID_DRAWINGCOLOR_BLUE

Code: m_color = RGB(0,0,255);

Repeat for ID_DRAWINGCOLOR_GREEN

Code: m_color = RGB(0,255,0);

Repeat for ID_DRAWINGCOLOR_BLACK

Code: m_color = RGB(0,0,0);

Repeat for ID_CLEAR

Code: Invalidate();